



ORIGINAL INSTRUCTIONS

CAUTION – READ THESE INSTRUCTIONS BEFORE USING THE MACHINE

imop Lite
Commercial Floor Cleaning Machine



USER MANUAL

EN



www.truvovox.com

EC DECLARATION OF CONFORMITY

EN (English)

Machine Type: Floor cleaning machine

Model: IMOPLITE...

This machine is in conformity with the following EU directives:

- Machinery Directive: 2006/42/EC
- The EMC Directive: 2014/30/EU

Applied harmonised standards:

BS/EN60335-1, BS/EN60335-2-72, BS/EN55014-1, BS/EN55014-2, BS/EN61000-3-2, BS/EN61000-3-3, BS/EN62233,

Truvox International Limited, Unit C (East), Hamilton Business Park, Manaton Way
Botley Road, Hedge End, Southampton, SO30 2JR, UK

Malcolm Eneas, Operations Director
22/10/2024



M. Eneas.

EC DECLARATION OF CONFORMITY

EN (English)

Machine Type: Floor cleaning machine

Model: IMOPLITE...

This machine is in conformity with the following EU directives:

- Machinery Directive: 2006/42/EC
- The EMC Directive: 2014/30/EU

Applied harmonised standards:

EN60335-1, BS/EN60335-2-72, EN55014-1, BS/EN55014-2, EN61000-3-2, EN61000-3-3, EN62233,

Truvox International SARL, 38 rue de Berri
75008 Paris, France

Malcolm Eneas, Operations Director
22/10/2024



M. Eneas.

IMPORTANT - BEFORE USE READ THESE INSTRUCTIONS AND RETAIN FOR FUTURE REFERENCE**INTRODUCTION**

The following instructions contain important information about the machine and safety advice for the operator. Equipment must be operated, serviced, and maintained in accordance with the manufacturer's instructions. If in doubt, contact the supplier of your machine.

  **Read all instructions before using the machine**

PRODUCT INFORMATION

The imop Lite floor cleaning machine is designed for use on smooth, even floors in indoor areas. This machine is for indoor use only. The machine is intended for commercial use, for example in hotels, schools, hospitals, factories, shops, offices, rental businesses and other than normal housekeeping purposes.

BATTERY INFORMATION**CAUTION**

Only use i-power@batteries specifically designed for use in i-mop@devices
The batteries must be fully charged before use.

SAFE DISPOSAL OF BATTERIES

- The batteries must be neutralised through an approved secondary treatment facility prior to disposal as waste.
- The battery can be recycled at an authorised facility, through a licensed waste carrier.

DETERGENTS AND CHEMICALS

1. When using cleaning and care agents, the manufacturer's danger warnings must be followed and protective goggles and clothing must be worn.
2. Only use low-foaming, water based, non-combustible cleaning agents which do not contain generally health-hazardous substances.
3. Please ensure that after each use any chemical residue is rinsed out with clean water.
4. DO NOT use cleaning solutions with a pH Level below 3 or above 11 in order to prevent damage to sensitive components.

TECHNICAL SPECIFICATIONS

Model	imop Lite	
Product Code	IMOPLITE	
Charging Voltage AC (~)/ Frequency	V/Hz	110-240/ 50/60
Battery voltage D.C	V	18
Battery details	Ah	12
Run time	mins	45
Charge time	hrs	6
Motor power	W	750
Brush width	cm	37
Brush speed	rpm	500
Brush pressure	g/cm ²	13
Productivity rate	m ² /h	1000
Sound pressure level	dB (A)	68
Solution tank capacity	litres	3
Recovery tank capacity	litres	4
Dimensions (L x W x H)	cm	34 x 43 x 120
Weight (inc. Battery)	kg	12.5
Warranty	1 year subject to conditions	

- Handle vibration does not exceed 2.5 m/s² when operating on a smooth hard surface.
- Noise levels measured at a distance of 1 meter from machine and 1.6 metres above floor, when washing a hard floor. Measurements recorded using a hand held meter.
- Above dimensions are approx. Since the company's policy is to continuously improve the product, there could be changes without prior notice.

WASTE ELECTRICAL & ELECTRONIC EQUIPMENT (WEEE)

Do not dispose of this device with unsorted waste. Improper disposal may be harmful to the environment and human health. Please refer to your local waste authority for information on return and collection systems in your area.

IMPORTANT SAFETY ADVICE

The safety information described in this manual provides basic precautions and supplements standards in force in the country where the machine is used.



This symbol warns the operator of hazards and unsafe practices which could result in severe personal injury or death.



WARNING – to reduce the risk of injury, electric shock or fire.



STRONG MAGNET Indicates that the machine contains strong magnets. These can cause pacemakers to stop working or cause electronic data to be damaged, such as information stored on access passes



PACEMAKER Indicates that operators and maintenance crew wearing pacemakers should keep a minimal distance of 6 in/15 cm. In this specific case operators may not use the machine as a backpack.

1. This machine must only be used for the manufacturer's approved application as described in this manual.
2. The machine must be unpacked and assembled in accordance with these instructions before connecting to the electrical supply.
3. Only genuine accessories and spare parts provided with the machine or those approved by the manufacturer should be used. The use of other accessories may impair the safety of the machine. All repairs must be performed by a qualified service agent.
4. **DO NOT** modify the machine from its original design.
5. Operators must be fully trained in the use of the machine in accordance with these instructions, able to perform regular user maintenance and the correct selection of accessories.
6. Operators should be physically capable to manoeuvre, transport and operate the machine.
7. Operators should be able to recognise unusual operation of the machine and report any problems.
8. This machine is not intended for use by persons (including children) with reduced physical, sensory or mental capabilities, or lack of experience and knowledge, unless they have been given supervision or instruction concerning use of the machine by a person responsible for their safety.
9. Keep children and unauthorised persons away from the machine when in use. **DO NOT** use as a toy.
10. **DO NOT** use if it has been damaged, left outdoors or dropped in water.
11. **DO NOT** use where hazardous dust is present.
12. **DO NOT** use in an explosive atmosphere.
13. **DO NOT** pick up or use near flammable or combustible fluids, hazardous dusts or vapours.
14. **CAUTION** - If it is suspected that there is hazardous dust or flammable/corrosive material, stop cleaning the area immediately and consult your superior.
15. **DO NOT** use to clean up any burning or lighted materials such as cigarettes, matches, ashes or other combustible objects.
16. Only use the machine on firm level surfaces. **DO NOT** use on a gradient or slope of more than 2%.
17. **DO NOT** use on rough, uneven surfaces e.g., industrial, or coarse concrete surfaces.
18. **DO NOT** use outdoors e.g., on patios, decks or rough surfaces.
19. **CAUTION** - This machine is for dry indoor use only and should not be used or stored outdoors in wet conditions.
20. Take care when using a machine near the top of stairs to avoid overbalancing.
21. **DO NOT** cover the machine when in use.
22. **DO NOT** run the machine dry, as this could damage the floor surface or the machine itself.
23. **DO NOT** leave machine running unattended.
24. Keep hair, loose clothing, hands, feet and all other parts of the body away from openings and moving parts.
25. **DO NOT** put any object into openings. **DO NOT** use with any opening blocked; keep free of dust, debris and anything that may reduce airflow.
26. **DO NOT** use volatile or combustible solvents (e.g., diesel/petrol/IPA/trichloromethane) nor any corrosive, toxic or highly irritant substances to wash floors, even if diluted. In the event of accidental contact with any such substances (e.g., due to spills) follow the decontamination procedures in force at the user site. If in any doubt about the condition of the machine, contact Truvox or the dealer/agent who supplied the machine.
27. **DO NOT** operate the machine if it malfunctions or is damaged in any way. Contact an authorised service agent for repair or adjustments.
28. **WARNING DO NOT** fill the machine with water hotter than 40°C.



CAUTION - Risk of electric shock

29. **DO NOT** operate the machine with a damaged charger power cord or plug, or after the machine malfunctions or is damaged in any way. Contact an authorised Service Agent for repair or adjustment.
30. The machine must be kept clean and in good condition with regular inspections of the charger power cord and plug for signs of any damage. If any parts are damaged, they shall only be replaced by an approved part by the manufacturer, its service agent or a similar qualified person in order to avoid a hazard.
31. Only replace the charger power cord with the type specified in the instruction manual.
32. When unplugging, pull the plug, not the charger power cord.
33. **WARNING:** Keep the power cord clear of moving parts.

34. **DO NOT** kink or twist the power cord and keep cord away from heated surfaces.
35. Unless charging, the plug of the charger power cord must be removed from the socket-outlet when not in use and before commencing cleaning of the machine or undertaking maintenance operations.
36. Opportunity / top up charging may damage the batteries. This may cause the run time to fall and overall battery life to be affected. AVOID TOP UP CHARGING.
37. **WARNING** – Charge only in a well-ventilated area.
38. **WARNING** - If the appliance is to be stored unused for a long period of time, disconnect the batteries.
39. **WARNING** - Do not short-circuit the supply terminals.
40. Report any liquid leaking from the battery. Leaks are dangerous and highly polluting.
41. The machine shall be disconnected from its power source when not in use and before commencing cleaning of the machine or maintenance and when replacing parts or accessories, by removing the plug from the socket-outlet.
42. Plug: Molded plug, UK standard 3 pin, 250V, 5A rated with BS approval and in-built BS approved fuse.
43. Connector: Molded connector, 250V, 2.5A rated, KE 22 connector.
44. The working range is 17~20.5V.

ASSEMBLY

Charging the battery

Make sure the battery is charged regularly.

1. Connect the power cable to the charger unit.



- 2.
3. Connect the charger to the battery. Remove the cover from the charger port on the battery. Connect the charger to the battery charger port.



- 4.
5. Connect the charger to the socket-outlet.
6. To prevent a reduced battery life due to self-discharge, batteries should be removed from the charger when it is not used for more than two days.

Display

LED Colour	RED	GREEN
STANDBY	Off	Slow flash
CHARGING	Off	Fast flash
FULLY CHARGED	Off	On
FAULT	Flashes	Off



CAUTION

Please be aware of the integrated magnets that hold the tanks in place and on the scrub deck.



WARNING

Operators and maintenance crew wearing pacemakers should keep a minimal distance of 6 in/15cm.

Attaching the brushes

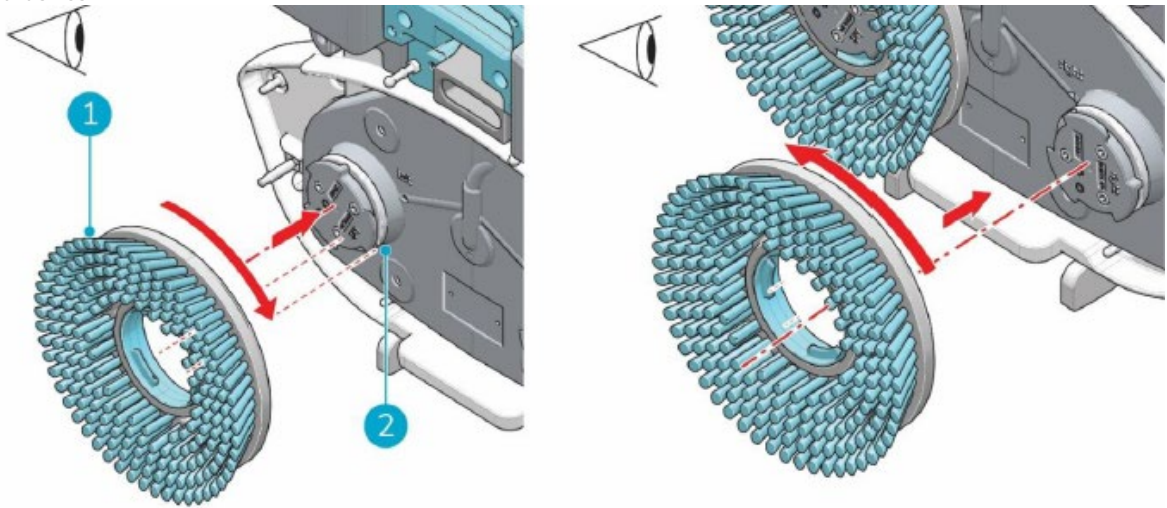


Fig. 1

To attach the brushes:

1. Put the i-mop@Lite in store position, see section 'STORAGE'.
2. Hold the scrub deck firmly with one hand.
3. Align the left brush (Fig. 1 pos. 1) with the left motor disk (Fig. 1, pos. 2). Align the latches and cut-outs in the brush and motor disk.
4. Push the brush on the motor disk.
5. Turn the left brush clockwise until you see the motor disk turning. The brush is now in place.
6. Align the right brush with the right motor disk. Align the latches and cut-outs in the brush and motor disk.
7. Push the brush on the motor disk.
8. Turn the right brush anticlockwise until you see the motor disk turning. The brush is now in place.

Attaching the squeegee

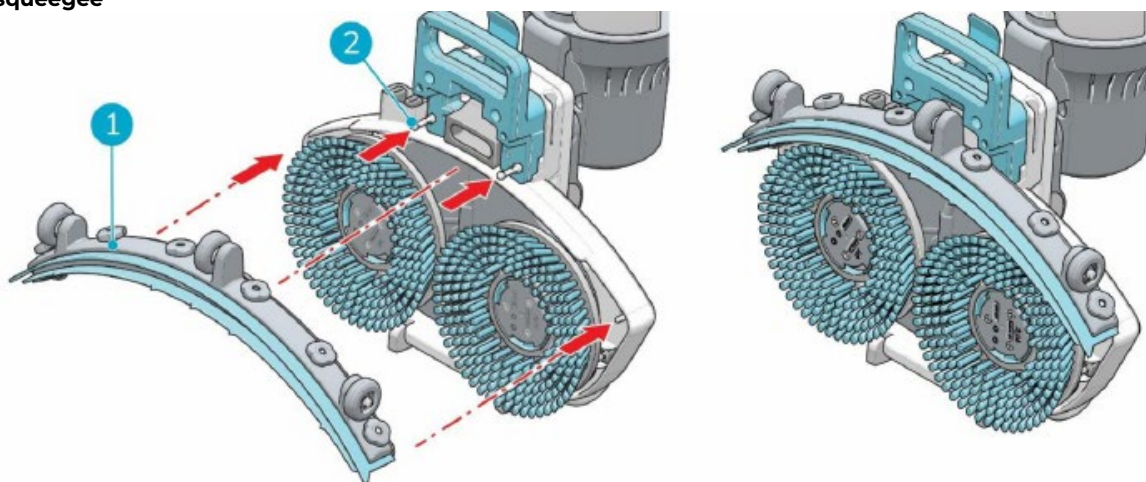


Fig. 2

To attach the squeegee:

1. Hold the scrub deck firmly with one hand.
2. Align the pins on the scrub deck (Fig. 2, pos. 2) with the holes on the squeegee (Fig. 2, pos 1).
3. Push the left side of the squeegee in place.
4. Push the right side of the squeegee in place.

Installing the cleaning solution tank

The tanks on the i-mop Lite use an anti-bacterial mix-in to make the plastic safer both inside and outside. Because it is mixed into the plastic, the effect will last the lifetime of the tank. Always keep the anti-bacterial tanks of the i-mop Lite out of direct sunlight. This can cause discoloration.

Put the tank (Fig. 3, pos. 1) on the i-mop® Lite with the valve first.

1. Press the tank downward on the nipple (Fig. 3, pos 3) to open the valve seal.
2. Push the tank forward into place, the magnet (Fig.3, pos. 2) will lock the solution tank in place.

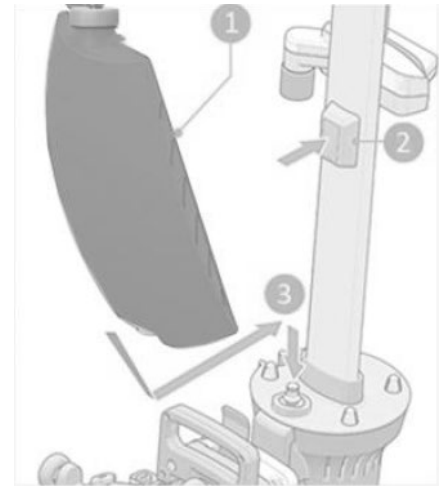


Fig. 3

Installing the recovery tank

1. Put the tank (Fig.4, pos 1) on the i-mop® Lite with the bottom first.
2. Position the tank on the nipples.
3. Push the tank in place, the magnet will lock the recovery tank in place.

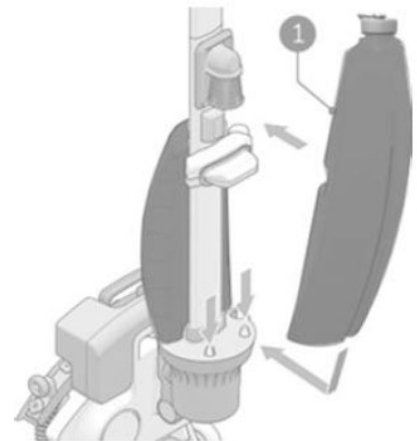


Fig. 4

PREPARATION

Inserting the battery



Only use the i-power batteries specifically designed for use in i-mop devices.

Ensure the body of the i-mop Lite is in an upright position when inserting the battery

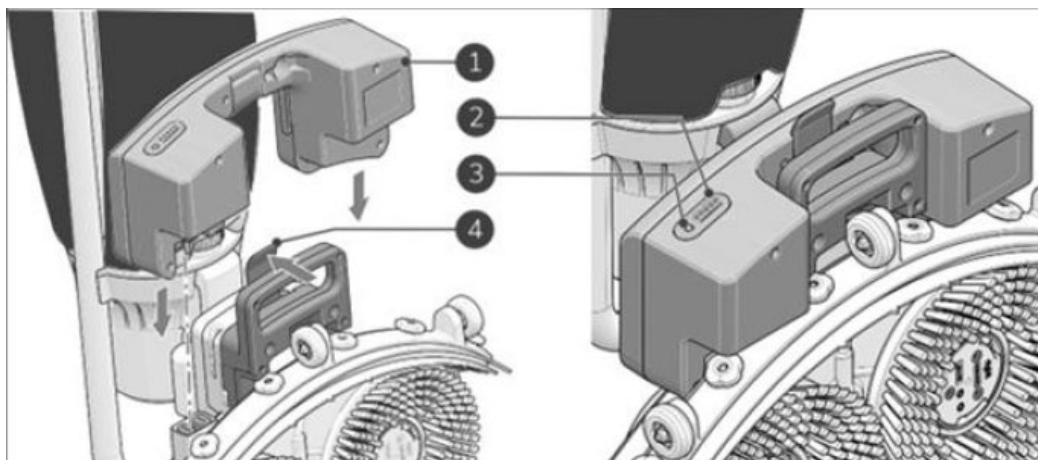


Fig. 5

1. Put the i-mop®Lite in store position, see section 'STORAGE'.
2. Push the battery (Fig. 5, pos. 1) in the battery slot. A click indicates that the battery is locked in place by the retaining clip (Fig. 5, pos 4).
3. During operation, you can check the amount of power left (Fig. 5, pos 2) by pressing the power indicator (Fig. 5, pos 3) on the battery.

Filling the cleaning solution tank



Ensure the body of the i-mop Lite is in an upright position when filling the tank

1. Remove the cap on the tank.
2. Pour in a maximum of 0.79 gal/ 3 L of cleaning fluid.
3. Replace cap and make sure it seals tightly.
4. Put the i-mop® Lite in store position, see section 'STORAGE'
5. Put the tank on the i-mop® Lite with the valve first (Fig. 6, pos 1).
6. Press the tank downward to break the valve seal.
7. Push the tank in place, the magnet will lock the solution tank in place.
8. Clean your hands afterwards.

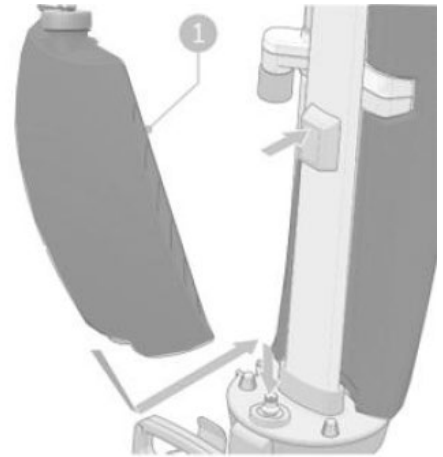


Fig 6

CONTROLS

Mode	Press
Brush only	
Vacuum only	
Use cleaning solution	
Use Eco mode	
Brush and cleaning solution	
Brush and cleaning solution and vacuum	
Brush and Eco and vacuum	

WORKING MODE

1. Crouch down while holding the scrub deck firmly with one hand (Fig. 7, pos 2).
2. Push the handle forward with your other hand (Fig.7, pos 1).
3. Bring the scrub deck slowly down to the floor. This will enable power to the machine



WARNING
Never push down the scrub deck with your foot.



Fig. 7

4. Stand behind the i-mop@Lite. Choose your cleaning mode via the buttons on the control panel (Fig.8, pos 1 to 4). You can select the options independently or combined.
5. Hold the handle with both hands.
6. Squeeze the trigger on the handle (Fig.8, pos 5). This will also start the i-mop@ Lite
7. Once the trigger is squeezed the i-mop@Lite will move forward.
8. Walk behind the i-mop@Lite.
9. Steer by gently turning the handle left or right to move the scrub deck (Fig. 8, pos 6).
10. The i-mop Lite can swivel 360 degrees making it possible to reverse direction.
11. Releasing the trigger (Fig.8, pos 5) will immediately stop the i-mop@Lite. The vacuum motor will stop after 3 seconds.

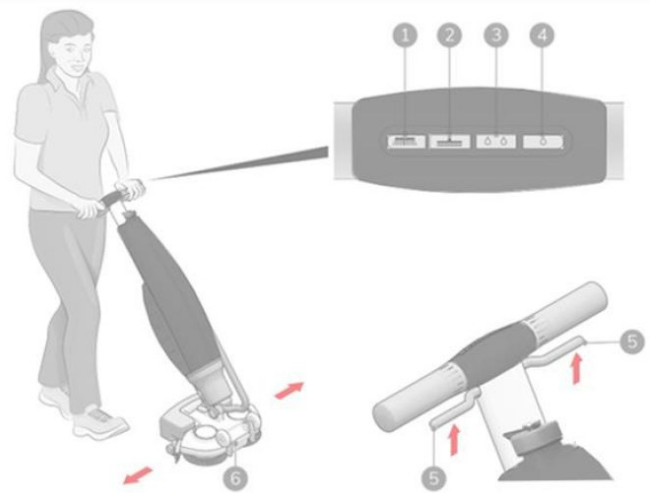


Fig. 8



WARNING

Do not operate the machine at more than an arm's length. (Fig.9) Operating below a 30-degree angle can cause water to run into the vacuum engine.

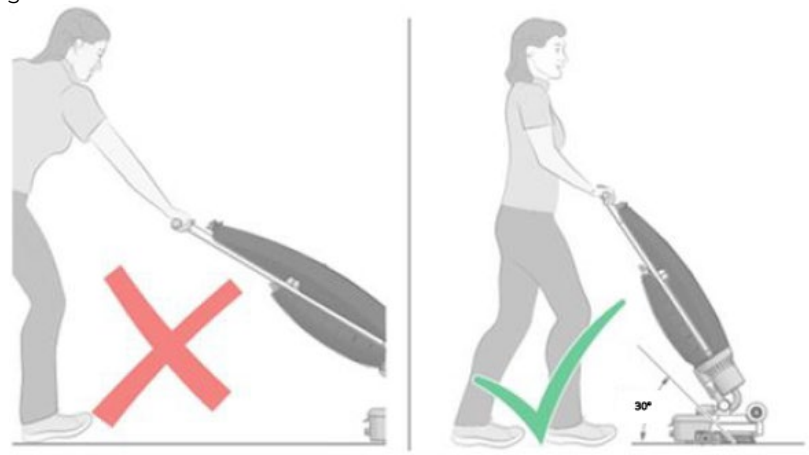


Fig.9

12. Optional you can use the parking and driving support. This parking and driving support will make it possible to park the i-mop@lite in vertical position but it also makes it easy to drive forward with a reduction of weight being forced on the user. (Fig.10)

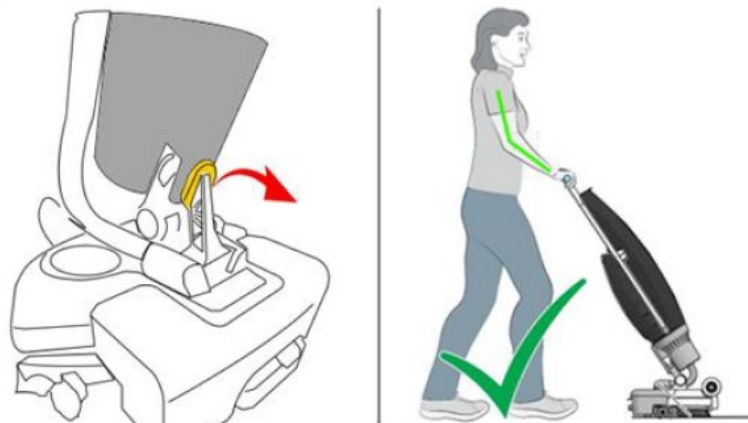


Fig. 10

ECO mode

The ECO mode will use 40% less cleaning solution.

1. Turn on the ECO mode by pushing the ECO button (Fig. 11, pos 1).
2. Turn off ECO mode by pushing the ECO mode again.
3. To start normal cleaning mode push button (Figure 11, pos2)

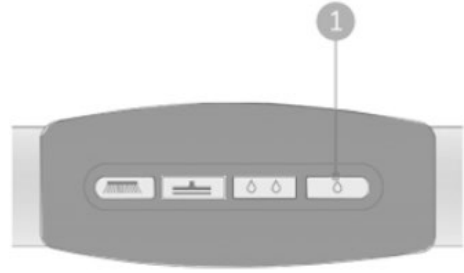


Fig. 11

Turning off the i-mop Lite

1. Releasing the trigger (Figure 12, pos 1) will automatically stop the i-mop@Lite.
2. Note that the vacuum motor will continue to run for approximately 3 more seconds.
3. Put the i-mop@Lite in store position, see section 4.2.

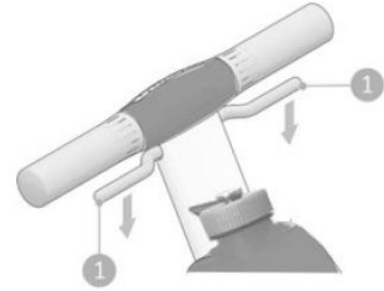


Fig. 12

CLEANING AND EMPTYING

Dispose of water or cleaning solution from both tanks in an appropriate drain. Even though the recovery tank is bigger, empty it each time the cleaning solution tank is filled.

Flushing the system

1. Be sure to flush the tanks out completely to discard any remaining solution in the lines and valves:
2. Refill the solution tank with 2 to 4 cups/
3. 0.5 to 1 liter of clean water.
4. Press the Brush and Cleaning solution and Vacuum buttons on the control panel.
5. Use the trigger to start the i-mop@ Lite and allow it to flush the system.

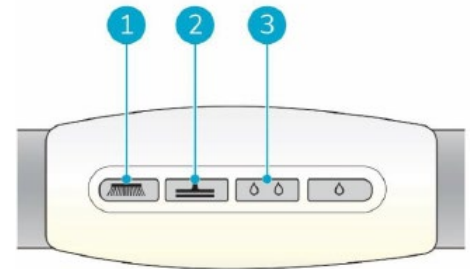


Fig 13

Cleaning the tanks

1. Dispose of water or cleaning solution from both tanks in an appropriate drain.
2. To clean the recovery tank thoroughly:
3. Partially fill the tank with fresh water and hold it horizontally with the holes facing up.
4. Tilt the tank repeatedly, thoroughly rinsing all the dirt and debris out from the tank.
5. To clean the solution tank, follow the same procedure.
6. Slightly open both tanks before storage to allow the tanks to dry.

Cleaning the filter

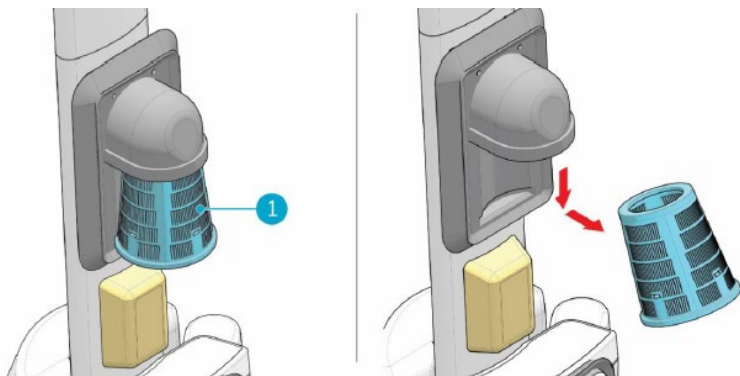


Fig 14

1. Put the i-mop® Lite in store position, see section 'STORAGE'
2. Remove the recovery tank.
3. Release the blue suction filter (Figure 14, pos 1) from beneath the rubber holder by tilting it slightly and pulling it out.
4. Clean the filter.
5. Place the filter back in the rubber holder.
6. Put the recovery tank back on the machine.

Removing the battery

1. Put the i-mop® Lite in store position, see section 'STORAGE'
2. Hold the i-mop® Lite by the scrub deck to stabilize.
3. Press the retaining clip inwards (Figure 15, pos 1) Battery will lift from its anchor, pull the battery away (Figure 15, pos 2).
4. When the i-mop® Lite isn't used regularly, store the charged battery in a dry, clean place.
5. Make sure the battery is charged monthly.

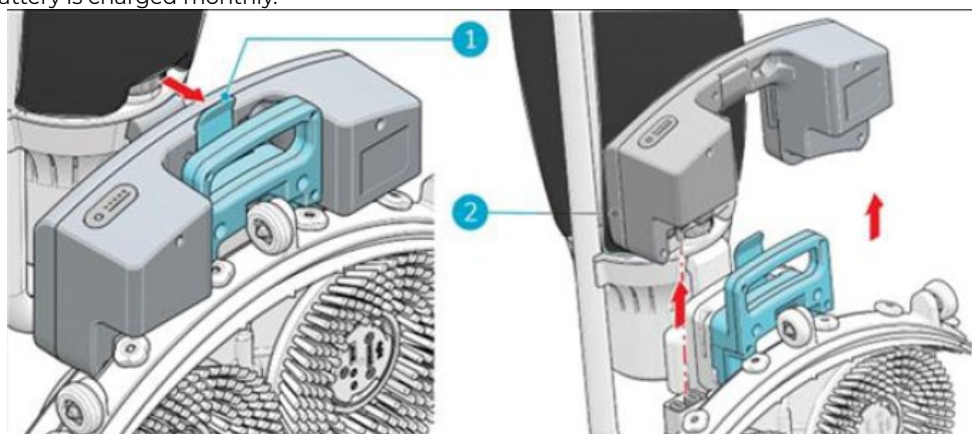


Fig 15

BRUSH REPLACEMENT

1. The brushes are attached to the scrub deck with a bayonet fitting.
2. Put the i-mop® Lite in store position, see section 'STORAGE'
3. Hold the scrub deck firmly with one hand.
4. Using your other hand to turn the left brush (Figure 16, pos 1) anticlockwise until you feel resistance or see the motor disk turning as well.
5. Pull the brush towards you, off the motor disk.
6. Turn the right brush clockwise until you feel resistance or see the motor disk turning as well.
7. Pull the brush towards you, off the motor disk.
8. Visually inspect the motor disks.
9. Clean the i-mop® Lite scrub deck with a clean, dry cloth before you install the brushes.

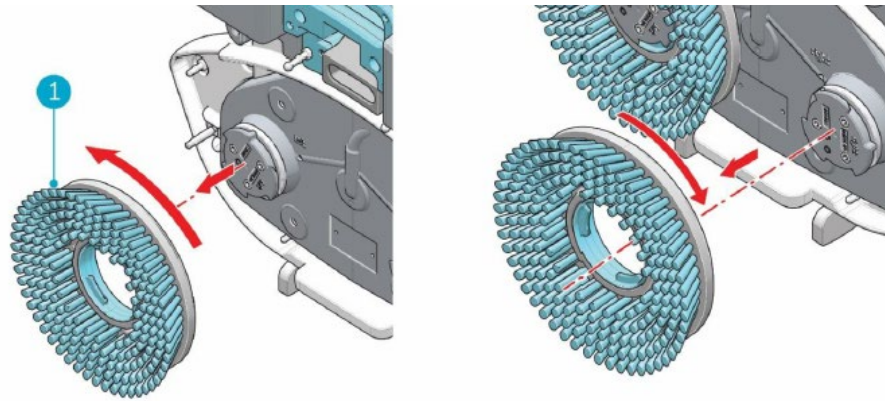


Fig. 16

SQUEEGEE REPLACEMENT

Detaching the squeegee

1. Put the i-mop@Lite in store position, see section 4.2.
2. Hold the scrub deck firmly with one hand.
3. Pull on the left side of the squeegee (Figure 17, pos 1) to remove it.
4. Pull on the right side of the squeegee to remove it.
5. Remove the vacuum hose from the squeegee by twisting the hose

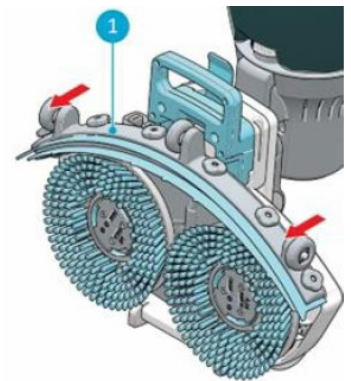


Fig.17

Flipping/replacing the squeegee blade

1. Unscrew the 6 plastic nuts on the back.
2. Take off the squeegee rear plate.
3. Once the plastic part is removed, you can easily take off the rear rubber blade.
4. Push the 6 screws through the front blade in order to remove the squeegee front plate.
5. Take off the rear rubber blade.
6. Inspect the front and rear rubber blades:
 - The first time: flip the blades so the top of the blade is now facing the floor. Push the front plate screws through the holes.
 - The second time: attach a new set of blades. Push the front plate screws through the holes.

CAUTION

The special squeegee blades that contain small arrow-like shapes cannot be switched. These need to be replaced every time.

7. Put back the plastic rear plate.
8. Screw the 6 plastic nuts on the back.

TRANSPORTING THE MACHINE

CAUTION

The transport wheels are not designed to roll over dirty surfaces, sand can cause the wheels to block. Lift the i-mop@ Lite while moving it from one building to another. (Fig. 18)

- Before transporting drain the machine and remove the battery
- Incorrect lifting techniques may result in personal injury. We advise that the manual handling regulations are followed.
- Ensure the machine is empty and remove the battery.
- Put the i-mop@Lite in store position, see 'STORAGE' section.
- Carry the i-mop@Lite with one hand while holding the handle (1) with your other hand.
- Do not expose the machine to rain or moisture.
- When transporting the machine ensure that all components, tanks and removable parts are securely fastened, and that the power cord and plug are not trailing.
- Do not lift or transport the machine whilst containing liquid as this will add considerably to the weight.
- When transporting the machine, the handle should be locked in the upright position.

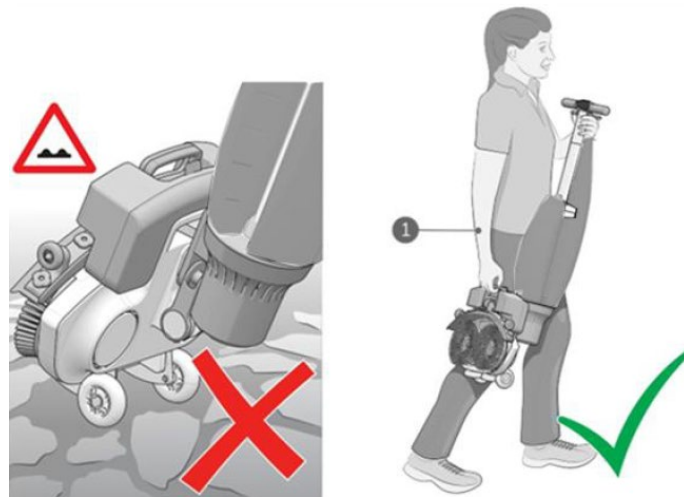


Fig. 18

Transporting in a vehicle

- The preferred way to transport the i-mop Lite is in an upright position and safely secured.
- Both tanks should be emptied
- The battery removed



The seal of the solution and recovery tank can be damaged during transport in horizontal position, make sure you remove the tanks before loading the machine into your car.

STORAGE



CAUTION

Please be aware of the integrated magnet on the scrub deck

- Always switch off, empty, wipe down and dry the machine after use.
- Both the solution and recovery tanks should be emptied and flushed out with clean water
- Store the machine in a dry indoor area only.
- Remove the battery for storage
- The storage position is in the upright position as described below. This position will disable the power to the machine.

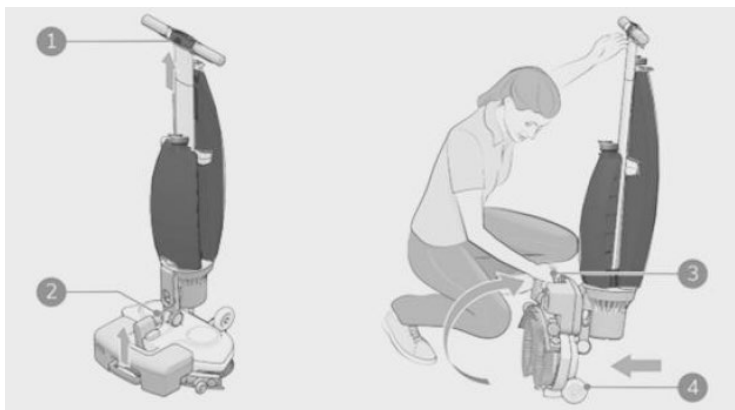


Fig.19

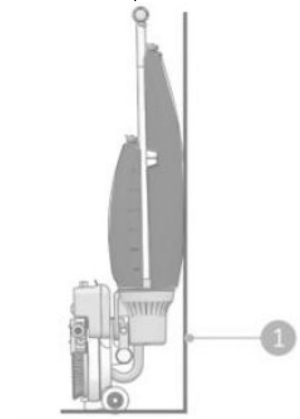



Fig. 20

1. Make sure the vacuum hose (Fig. 19 (2)) is pushed back into the machine so it cannot get squeezed.
2. Crouch down and hold the handle (Fig. 19 (1)) with one hand while holding the scrub deck (Fig. 19 (3)) with your other hand.
3. Lift the scrub deck slowly until it stands upright on the front wheels (Fig. 19 (4)). Guide the body towards the scrub deck until it snaps into a resting position.
4. Store the i-mop Lite close to a wall with the handle pointing towards the wall and the brushes facing away from the wall (Fig. 20)

MAINTENANCE

 **WARNING** - Before undertaking maintenance operations or adjustments switch off machine and remove the battery.

 **CAUTION** – Always keep the body of the i-mop Lite in the stored position when replacing the brushes or the squeegee

IMPORTANT – All other servicing and repairs should only be performed by a Truvox engineer or Authorised Service Agent.

IMPORTANT – Should the machine fail to operate please refer to the fault diagnosis section in the back of this instruction manual. If the problem / remedy is not listed, please contact Truvox Customer Service Department for rapid attention.

The machine requires minimum maintenance apart from the following checks by the operator prior to use:

- Body of the machine - Clean with a damp cloth.
- Charger power cord - regularly inspect sheath, plug and cord anchorage for damage or loose connection. Only replace the power cord with the type specified in these instructions.
- Brushes - Check to see if both brushes are clean and intact. Clean them under fresh water or replace them if necessary. Replace brushes if the yellow wear indicator is the same height as other bristles. Replace brushes as described in section 'BRUSH REPLACEMENT'
- Squeegee Blades - Check to see if the squeegee is clean and intact. Clean it with fresh water and wipe it with a clean, damp cloth. The squeegee blades come in pairs and wear out over time. When you notice the floor is no longer being dried properly, replace the squeegee blades as described in section 'SQUEEGEE REPLACEMENT'

AFTER SALES SERVICE

Truvox machines are high quality machines that have been tested for safety by authorised technicians. It is always apparent that after longer working periods, electrical and mechanical components will show signs of wear and tear or ageing. To maintain operational safety and reliability the following service interval has been defined: Every year or after 250 hours. Under extreme or specialised conditions and/or insufficient maintenance, shorter maintenance intervals are necessary.

Use only original Truvox spare parts. Use of other spare parts will invalidate all warranty and liability claims. Should you require after sales service please contact the supplier from whom you purchased the machine, who will arrange service. Repairs and servicing of Truvox products should only be performed by trained staff. Improper repairs can cause considerable danger to the user.

GUARANTEE

Your product is guaranteed for one year from the date of original purchase, or hire purchase, against defects in materials or workmanship during manufacture. Within the guarantee period we undertake at our discretion, to repair or replace free of charge to the purchaser, any part found to be defective, subject to the following conditions:

CONDITIONS

1. Claims made under the terms of the guarantee must be supported by the original invoice/bill of sale issued at the time of sale, or the machine Serial No.
2. For claims under this guarantee contact the supplier from whom you purchased the product who will arrange the appropriate action. Do not initially return the product as this could result in transit damage.
3. Neither Truvox nor its distributor shall be liable for any incidental or consequential loss.
4. This guarantee is governed by the laws of England.
5. This guarantee does not cover any of the following:
 - Periodic maintenance, and repair or replacement of parts due to normal wear and tear.
 - Damage caused by accident, misuse or neglect, or the fitting of other than genuine Truvox parts.
 - Defects in other than genuine Truvox parts, or repairs, modifications or adjustments performed by other than Truvox service engineer or authorised service agent.
 - Costs and risks of transport relating directly or indirectly to the guarantee of this product.
 - Consumable items such as, brushes, drive discs, filters and vacuum skirts.

This guarantee does not affect your statutory rights, or your rights against the supplier arising from their sales or purchase contract. Truvox International Limited policy is one of continual product development and we reserve the right to alter specifications without prior notice.

RECOMMENDED SPARES & ACCESSORIES

Description

i-mop i-dose 3/5/7 Mixed 10ML (120pcs)	86-0000-0000
i-mop i-dose 3 Sanitary Pink 10ML(120pcs)	86-0001-0000
i-mop i-dose 5 Daily Blue 10ML (120pcs)	86-0002-0000
i-mop i-dose 7 Degreasing Green 10ML(120pcs)	86-0003-0000
i-mop Lite Squeegee Kit Front Primothane (10pcs)	86-0004-0000
i-mop Lite Squeegee Kit Rear Primothane (10pcs)	86-0005-0000
i-mop Lite Squeegee Kit Front Linatex (10pcs)	86-0006-0000
i-mop Lite Squeegee Kit Rear Linatex (10pcs)	86-0007-0000
i-mop Lite Medium Brush Blue (Pack of 2)	86-0008-0000
i-mop Lite Hard Brush Red (Pack of 2)	86-0009-0000
i-mop Lite Natural Brush Blue (Pack of 2)	86-0010-0000
i-mop Lite Pad Drive Blue (1 piece)	86-0011-0000
i-mop Lite Pad Red (Pack of 10)	86-0012-0000
i-mop Lite Twister Pad Green (1 piece)	86-0013-0000

FAULT DIAGNOSIS

The following simple checks may be performed by the operator. If the machine is still not working, please contact your local Service Agent:

Trouble	Reason	Remedy
Machine fails to start – no power	<ul style="list-style-type: none"> No battery Empty battery Battery incorrectly placed 	<ul style="list-style-type: none"> Insert battery Charge battery Remove and re-install battery
Unsufficient/no water flow	<ul style="list-style-type: none"> Wrong program • ECO mode is on Empty tank Tank incorrectly places Filter blocked Blocked water pipe 	<ul style="list-style-type: none"> Check the operating mode on the control panel Check the ECO mode light on the control panel Fill the tank The tank vave must be clicked on the nipple to open the seal, replace the tank Ensure the solution tank has no dirt particles and the filter is clean Request for service
Poor water pick up	<ul style="list-style-type: none"> Squeegee opening is blocked Tears in squeegee blades Filter is blocked Vacuum hose is blocked Vacuum pump not running 	<ul style="list-style-type: none"> Remove the pipe and clean the squeegee opening Replace squeegee blades Check the yellow filter and clean if necessary Check and remove blockage Contact service agent
Leakage	<ul style="list-style-type: none"> Tanks incorrectly placed Tear in vacuum hose 	<ul style="list-style-type: none"> Check and reattach fluid tanks Replac vacuum hose or request for service
Battery not charging	<ul style="list-style-type: none"> Battery has reached end of life 	<ul style="list-style-type: none"> Replace battery
Charger not charging	Check fuse	<ul style="list-style-type: none"> Replace blown fuse if required
Charger not charging		<ul style="list-style-type: none"> Contact service agent

*If the fuse blows several times, the machine should be checked by an authorised Service Agent