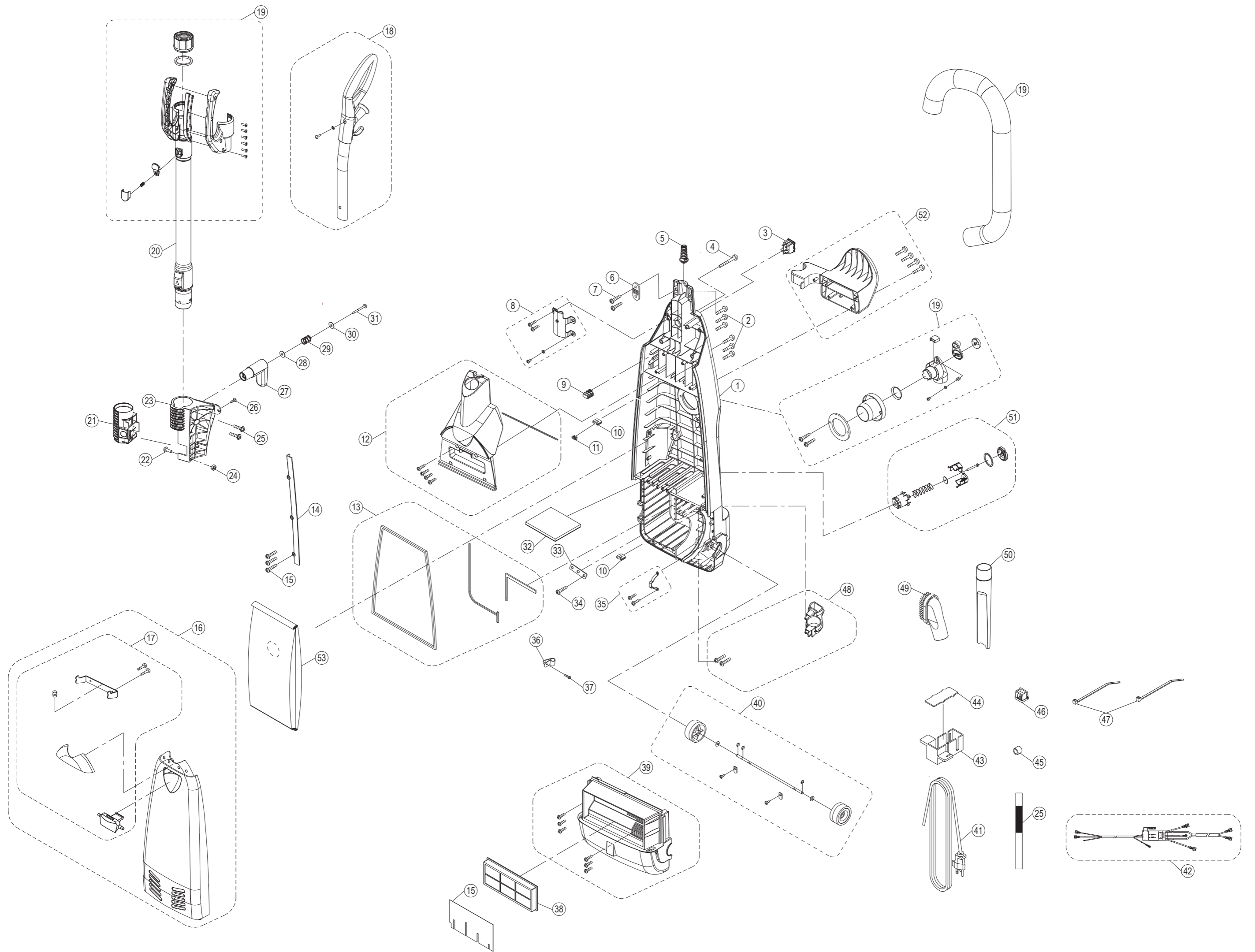


Tacony CFC	VALET DUAL MOTOR UPRIGHT	
Part Number:	VDMU	
Series:	A	
Date:	09-Jan-23	
Reference Drawing Number:	A	
Reference Drawing Issue:		
Modified By:	N Dowse	
Service Parts List Issue:	I	ECN #
Description of Change:		-

Ref. No.	Part No.	Part Description	Qty
1	89-0058-0000	Dust Compartment With Carton Packaging	1
2		Screw (M4x12B)	1
3	89-0060-0000	On/Off Switch	1
4		Handle Screw (M5 x 45)	1
5	89-0059-0000	Boot Strain Relief	1
6	89-0075-0000	Cord Holder	1
7		Screw (M4x12)	1
8	89-0068-0000	Handle Fitting Complete	1
9		Terminal block	1
10	89-0061-0000	Cord Holder	1
11		CORD PLATE COVER SEAL	1
12	89-0062-0000	Handle Housing	1
13	89-0063-0000	Seal Complete	1
14	89-0076-0000	Motor Cover Holder Plate	1
15		Screw (M4x12B)	1
16	89-0064-0000	Dust Cover Complete	1
17	89-0065-0000	Dust Cover Release Handle Complete	1
18	89-0074-0000	Handle Assembly Complete	1
19	89-0072-0000	Suction Inlet Complete	1
20	89-0055-0000	Wand Attachment	1
21	89-0095-0000	Wand Clean Out	1
22		Screw (M4 x 12B)	1
23	89-0091-0000	Wand Attchement Holder	1
24		Nut (6.8x7.8x3 M4x0.7)	1
25		Screw (M4x12)	1
26		Screw (M4x12B)	1
27	89-0092-0000	Cord Hook	1
28		Washer (10.2x15x0.3)	1
29		Spring	1
30		Washer (10.2x15x0.3)	1
31		Screw (M4x35)	1
32	89-0057-0000	Secondary Filter	1
33		Bushing Presser	1
34		Screw (M4x12B)	1
35	89-0066-0000	Support Strap Complete	1
36	89-0106-0000	Cord Plate	1
37		Screw (M3x0.5 L10)	1

38	89-0056-0000	HEPA 12 Filter	1
39	89-0067-0000	Motor Cover Complete	1
40	89-0069-0000	Rear Wheel Assembly	1
41a	87-0077-0000	Power Cord UK	1
41b	89-0078-0000	Power Cord EU	1
42	89-0093-0000	Emi Circuit Complete	1
43	89-0090-0000	Electrical Circuit Box	1
44		Electrical Circuit Box Cover	
45	89-0104-0000	Ferrite Core	
46		Wire Bushing	
47		Cord Clip	
48	89-0070-0000	On-Board Tools Holder Complete	1
49	89-0053-0000	Dusting Brush (Natural)	1
50	89-0054-0000	Crevice Tool	1
51	89-0071-0000	Relief Valve Assembly	1
52	89-0073-0000	Hose Hanger Complete	1
53	89-0052-0000	Dust Bag (Pack Of 10)	1
30	04-3976-0000	6.3Amp Fuse (Not Shown)	1



Base Assembly			
1	89-0089-0000	Micro Switch Complete	1
2	89-0084-0000	Plastic Housing	1
3	89-0081-0000	Nozzle Housing	1
4	89-0100-0000	Board Complete	1
5	89-0079-0000	Nozzle Hose	1
7	89-0080-0000	Furniture Guard	1
8		Washer (4.2x13x1.0)	7
9		Rivet	7
10	89-0103-0000	Agitator Cover	1
11		Screw (M4x21B)	1
12	89-0087-0000	Brush Motor Cut Out Switch	1
13		Washer (4.2x12x1)	1
14		Screw (M4x15)	1
15	89-0099-0000	Vented Support Fitting Complete	1
16	89-0051-0000	Belt Complete - Pack Of 2	1
17		Brush Motor Complete	1
18	89-0085-0000	Brush Motor	1
19		Lower Plate	1
20		Base Plate Wheel Pin	1
21		Base Plate Wheel	1
22		CS - Ring (CSTW-4)	1
23	89-0082-0000	Bottom Plate Assembly	1
24		Bottom Plate Screw	1
25	89-0098-0000	Pinned Brush Roll Assembly	1
26	89-0102-0000	Wiring Kit	1
27		Connecting Cord	1
28	89-0096-0000	Pedal Frame Complete	1
29	89-0088-0000	Vacuum Motor Complete	1
30		Rear Rubber	1
31		Washer	1
32		Screw (M4x6)	1
33	89-0086-0000	Motor Cover	1
34		Front Rubber	1
35		Pivot Sleeve	1
36		Sound Suppressor	1

