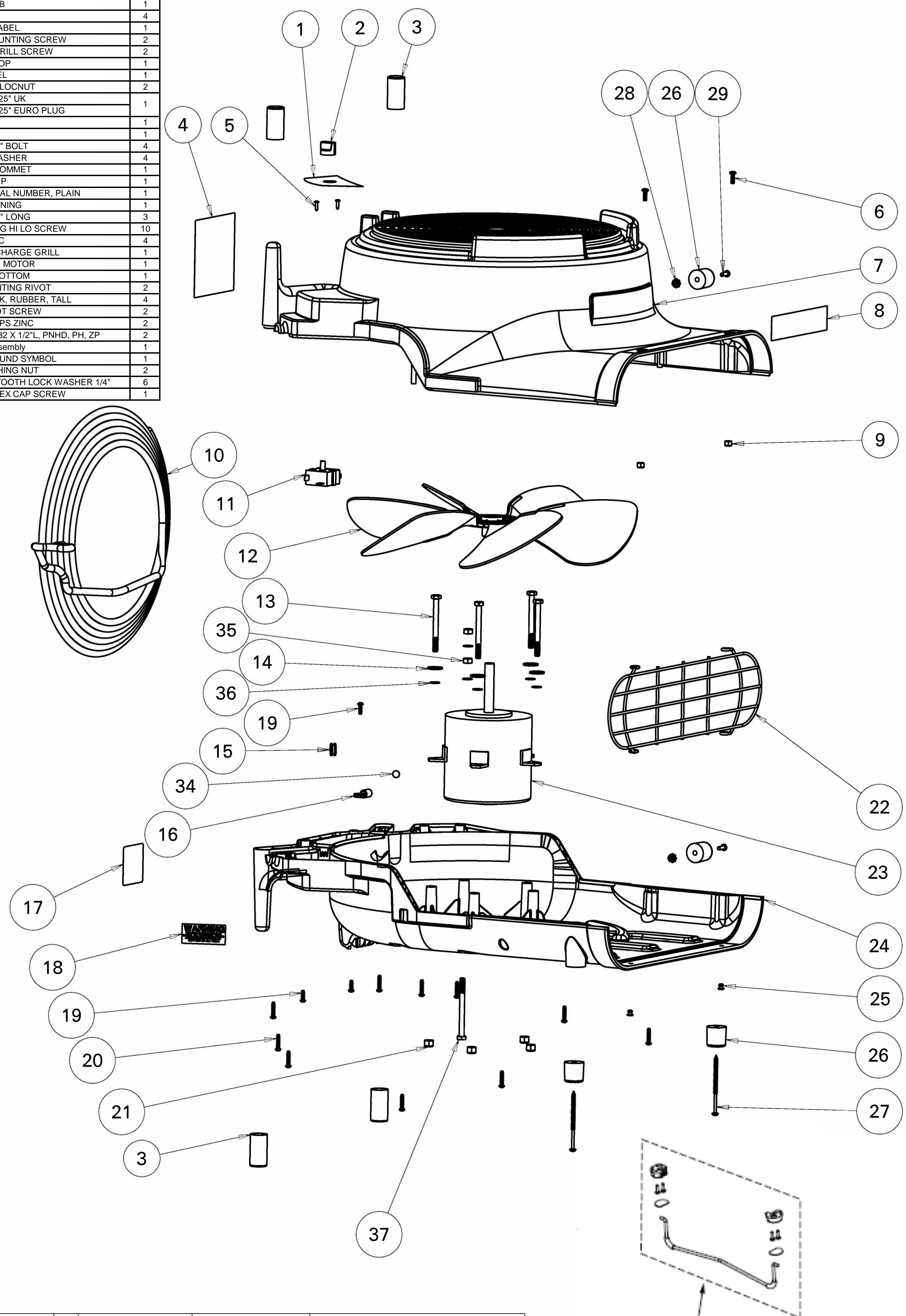


Item	Part No.	Part Description	Qty
1	X9728	SWITCH LABEL	1
2	X9831	DRYER KNOB	1
3	X9731	VYNAL CAP	4
4	X9727	WARNING LABEL	1
5	X8903	SWITCH MOUNTING SCREW	2
6	X8278	8-32 X 1/2" GRILL SCREW	2
7	X9701	HOUSING, TOP	1
8	X1144	FRONT LABEL	1
9	X8260	8-32 NYLON LOCNUT	2
10	PD7E	CORD 230V 25" UK	1
	71912A	CORD 230V 25" EURO PLUG	1
11	X9329E	SWITCH	1
12	X1023	FAN BLADE	1
13	X9702	1-4-20 X 2.75" BOLT	4
14	X8235	1/4" FLAT WASHER	4
15	X9705	RUBBER GROMMET	1
16	04-0286-0000	CABLE P-CLIP	1
17	X8459	LABEL, SERIAL NUMBER, PLAIN	1
18	X8976	LABEL, WARNING	1
19	X9690	8-18 HI-LO .5" LONG	3
20	X9676	8-18 3/4 LONG HI LO SCREW	10
21	X8237	1/4-20 NYLOC	4
22	X8871	DRYER DISCHARGE GRILL	1
23	X9674-230	230V DRYER MOTOR	1
24	X9700	HOUSING, BOTTOM	1
25	X8946	GRILL MOUNTING RIVOT	2
26	XPD3B	FOOT, BLACK, RUBBER, TALL	4
27	X9704	HYBRID FOOT SCREW	2
28	X8256	NUT 8-32 KEPS ZINC	2
29	PX73	SCREW, #8-32 X 1/2"L, PNHD, PH, ZP	2
30	X1414	Kickstand Assembly	1
34	X9214	LABEL, GROUND SYMBOL	1
35	X8213	1/4-20 FINISHING NUT	2
36	X9703	EXTERNAL TOOTH LOCK WASHER 1/4"	6
37	X1143	1/4-20 X 3" HEX CAP SCREW	1



REV	DATE	ECN	DESCRIPTION	BY	MATL	SEE PARTS	FINISH	SEE PARTS	TRUVOX
01	2/6/14		ADDED X9703, X8213, X1143, X1144, X9329E	VK	DWN	AD	DATE 8/16/12	SCALE 0.300	SHEET 1 OF 1
02	20/8/19		Kitted the kickstand	JW					

<small>TACOY CORPORATION CLAIMS PROPRIETARY RIGHTS IN THE MATERIAL DISCLOSED HEREIN. THIS DRAWING IS ISSUED FOR ENGINEERING INFORMATION ONLY. IT MAY NOT BE REPRODUCED, NOR MAY THE INFORMATION HEREIN BE USED FOR MANUFACTURING PURPOSES WITHOUT WRITTEN PERMISSION FROM TACOY CORP.</small>		<b>DESCRIPTION</b> TRUVOX 230V DRYER <b>REV MODEL:</b> 03 <b>REV DRAWING:</b> 02 <b>PN:</b> HB3400
---	--	--

3101 Wichita Court  
Fort Worth, TX 76140-1755